



# NAVIS™

YACHTS DESIGN & LIFESTYLE

Issue 43 | August / September 2018

Global Challenges

# Volvo Ocean Race

Abeking & Rasmussen 72m  
**CLOUDBREAK**

Sunseeker 35m  
**Lost Boys**

Sunreef 24m  
**7X SPLIT**

Super Cars  
**Bentley Continental GT**

Extraordinary Destinations  
**Dubai and The Maldives**

[www.navisyachts.com](http://www.navisyachts.com)

05



0 74470 26308 1

# Sunreef 24m 7X SPLIT

Photos: Sunreef Media | Words: Andrew Paniello





### **Sunreef 80: Redefining the Catamaran Experience**

Though the catamaran is widely identified as one of the most timeless models of watercraft, companies such as Sunreef Yachts have strived to continue to improve on the way these ships are built. With the recent release of the Sunreef 80, it has become clear that the dedicated staff at Sunreef has kept their commitment to redefining the catamaran experience.

There are many different things that you might want to see in a modern catamaran. Unlike many of their older ancestors, the modern catamaran has explicitly become focused on trying to include the broadest range of luxury features available. Things such as aesthetic appeals, architectural creativity, and the careful selection of the finest materials in the world are all incredibly important. Additionally, speed, distance, and other performance metrics all need to be paid attention to as well. Fortunately, from the moment you first witness the majestic beauty that is the Sunreef 80 Catamaran, it becomes clear that achieving all of these noble objectives is something that is certainly quite possible.

### **An Engineering Masterpiece**

When compared to yachts of larger sizes, the need for engineering perfection in a catamaran is particularly relevant. As you begin witnessing the curves, the edges, and the dimensions of her body, it seems that the Sunreef 80 is a ship that has set the new standard for engineers across the world. The design team sought to create a boat that not only outperforms many of the comparable alternatives but also implements an effective use of light and space throughout.

At 80 feet (24.4 meters) in length, the Sunreef 80 offers owners significantly more space than their popular 60-foot model. The beam on the craft is 37.7 feet, which—by most engineering metrics—seems to be the perfect length for a craft of this size. With over 3,650 square feet of living space, there is also plenty of room for both exploration and privacy. Having two 280 HP engines and 2,400 liters of fuel capacity make the Sunreef 80 even more capable of outperforming her competitors on the open waters.

As you walk around the decks of this particular masterpiece, the objectives of the naval architects and design team become even more apparent. Things such as balance, symmetry, form, and function were all taken into account throughout the duration of the design process. Though the team could have likely cut corners or ignored the importance of paying attention to details, they clearly choose not to do so. Every single aspect of the craft appears as if it were sculpted and inspired by something divine. The ship is not only a testament to what the team at Sunreef was capable of designing, but it is a testament to the engineering potential of the humanity as a whole.



### Purity of Design

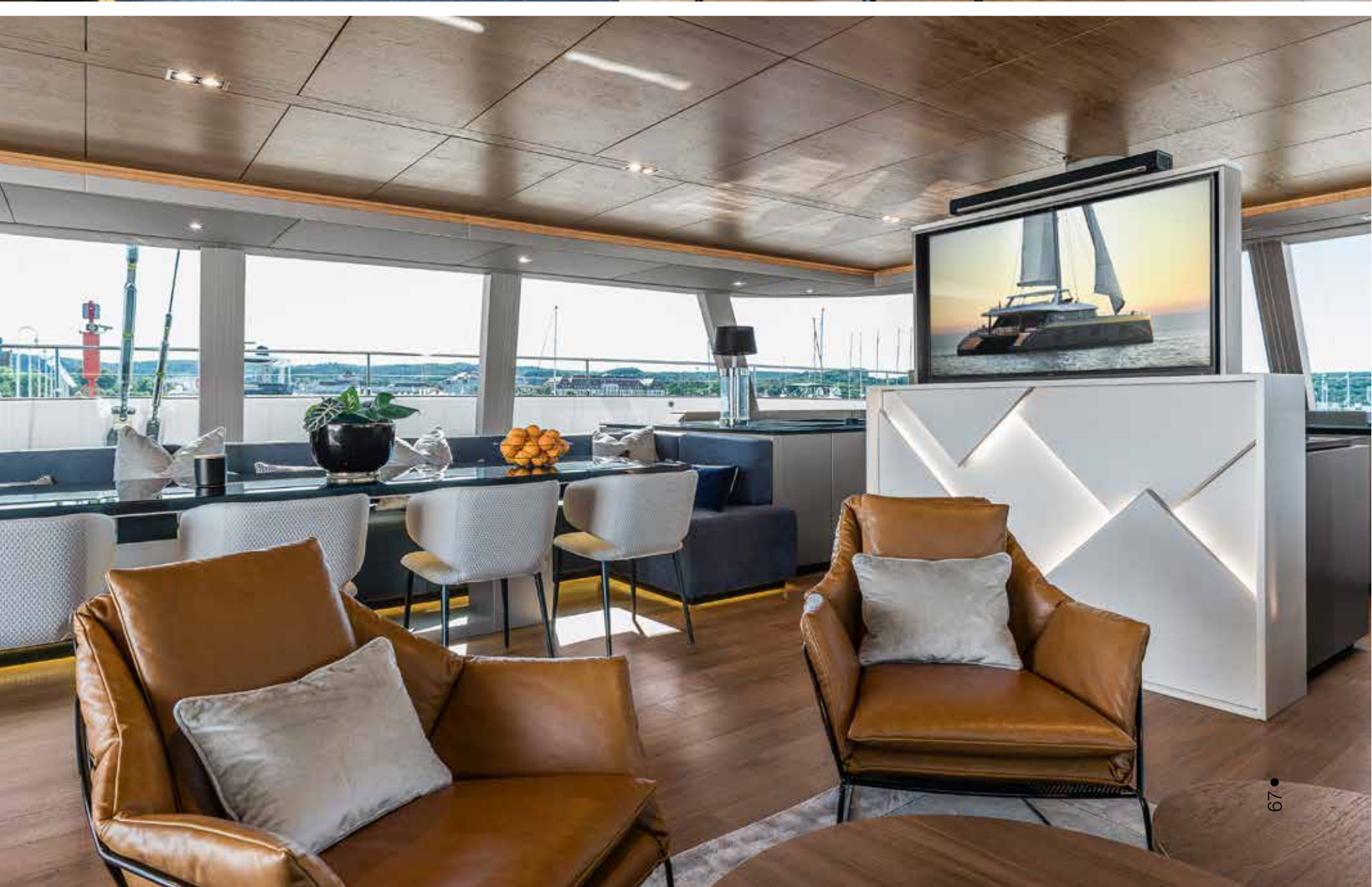
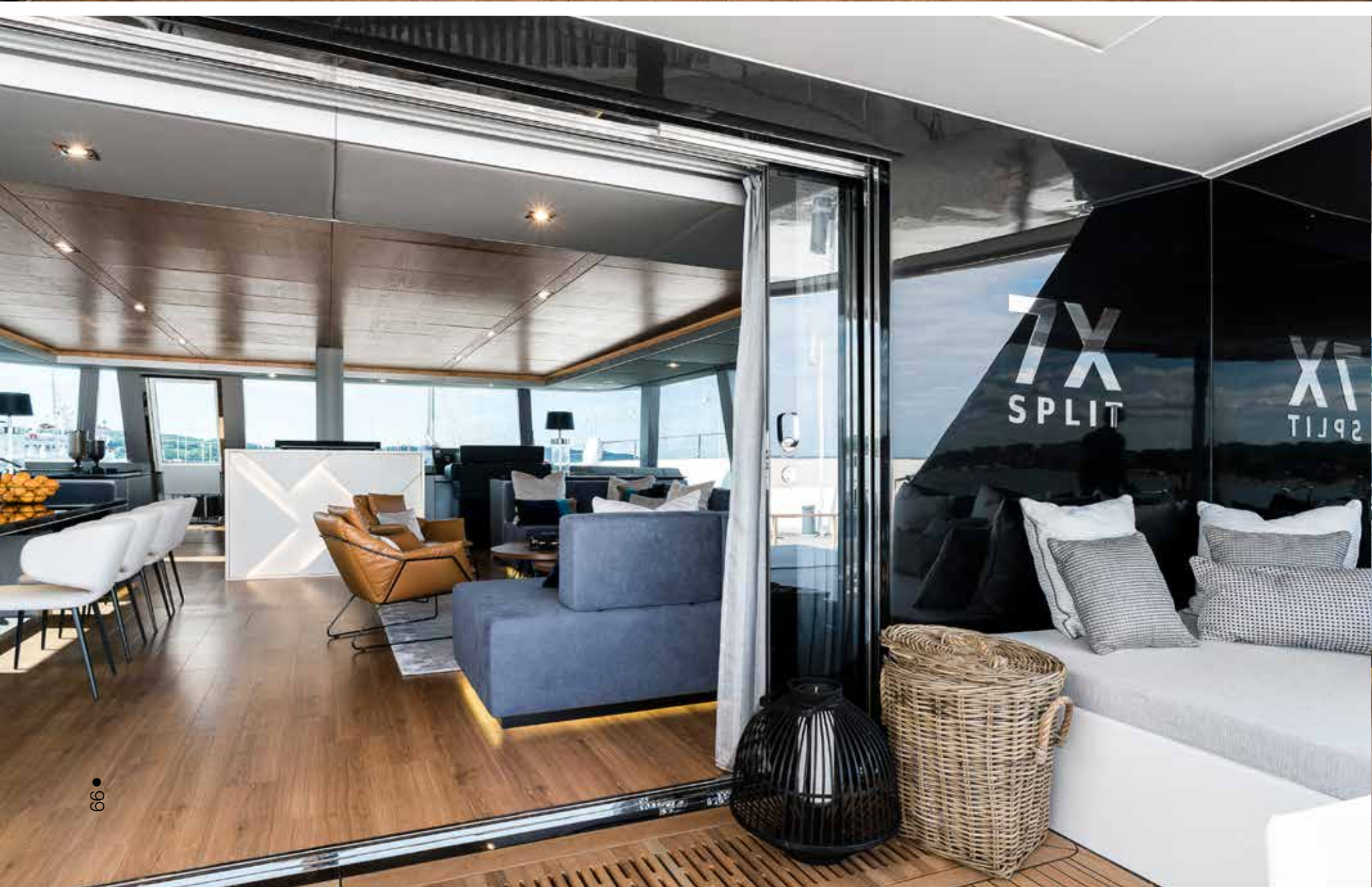
If the design of the ship were to be described in a single word, that word would be none other than pure. According to Sunreef, “Purity, space, and light are the essential elements of the newest sail range boasting a combination of exterior and interior areas flowing into one another.” The team correctly identified the importance of incorporating the interior of the ship with the natural beauty of the world around it. Whether you are hoping to enjoy the stunning Fjords of Norway, the sunshine of the Mediterranean, or any other element of our world’s natural beauty, the Sunreef 80 makes it possible for all passengers to be within reach of nature.

Upon exploring her interior spaces, the commitment to purity and simplicity of design becomes even more apparent. Contrary to many of the ships that are designed to imitate the decadence of the art-deco era, Sunreef recognizes that sometimes the simplest designs are the ones that are the most aesthetically appealing.

Simple colors such as gray, white, teal, and black create a look that is incredibly clean and contemporary. The materials used are minimal, yet, owners of this luxury watercraft will surely never find themselves wanting for anything more. The use of well-polished woods and juxtaposing colors help the main decks feel as bold as a catamaran ought to be. Additionally, the ample inclusion of discrete lighting features—superbly complemented by the windows allowing in light from outside—help promote the general theme of “purity” even further.

As you move from the lower deck into the significantly more open spaces up above, the indoor and outdoor areas of the ship begin to feel almost indistinguishable. The combination of windows, sliding glass doors, and tastefully incorporated curtains make it incredibly easy to transition from one area of the ship to another. With plenty of seating and lounging areas outdoors—even with the massive 200 square meter sail overhead—establishing a pure connection to the sea around you becomes even more possible. Just as any work of art ought to do, the design of the Sunreef 80 seems to say everything it intends to without ever speaking out of turn or saying too much.







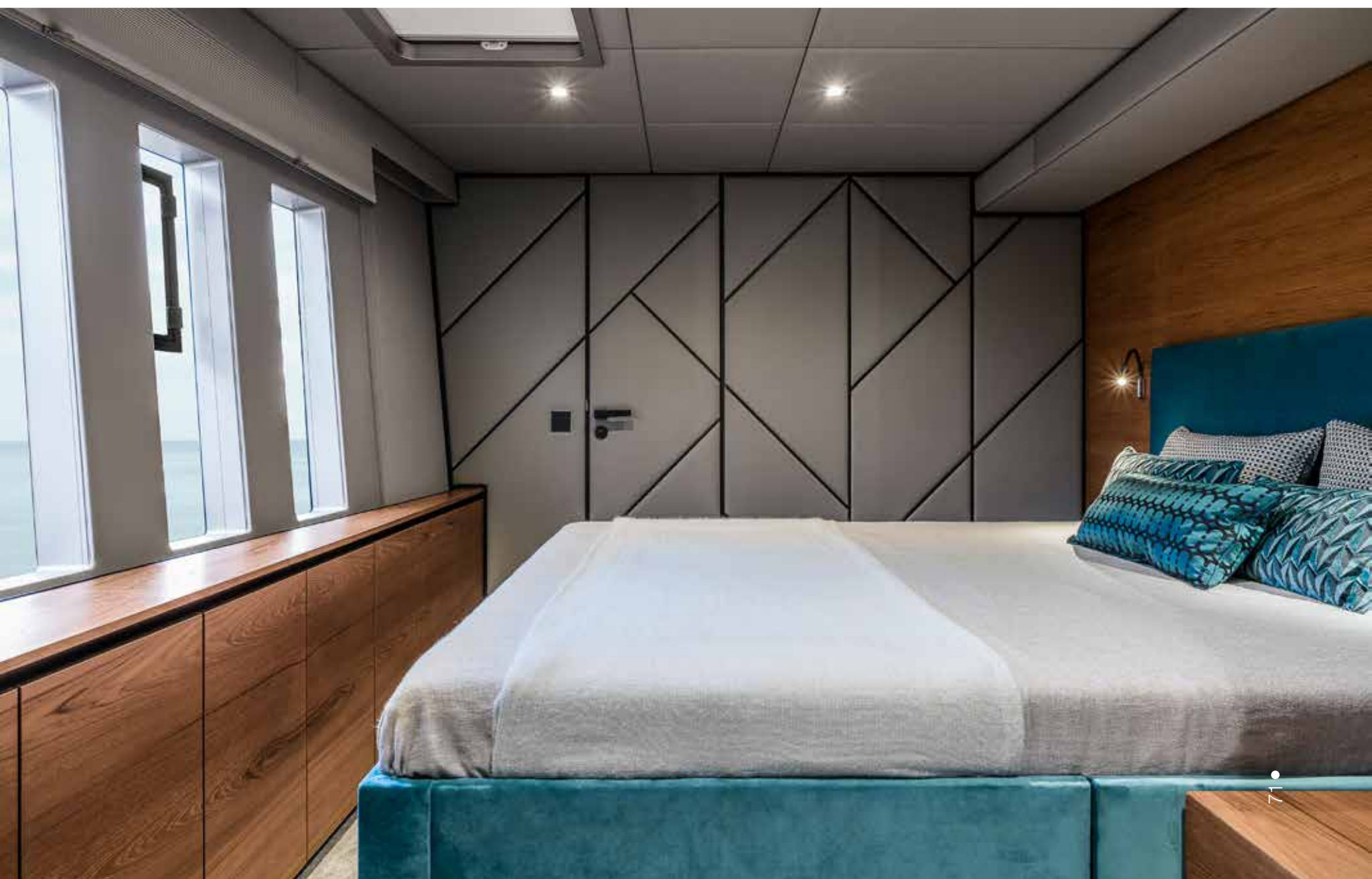
### **The Ideal Space for Relaxation**

Throughout the entirety of the ship, you will soon discover countless spaces for relaxation, lounging, and socializing with your closest friends. Furthermore, the flexible and customizable interior spaces make it incredibly easy to transition between various zones no matter what you desire to do.

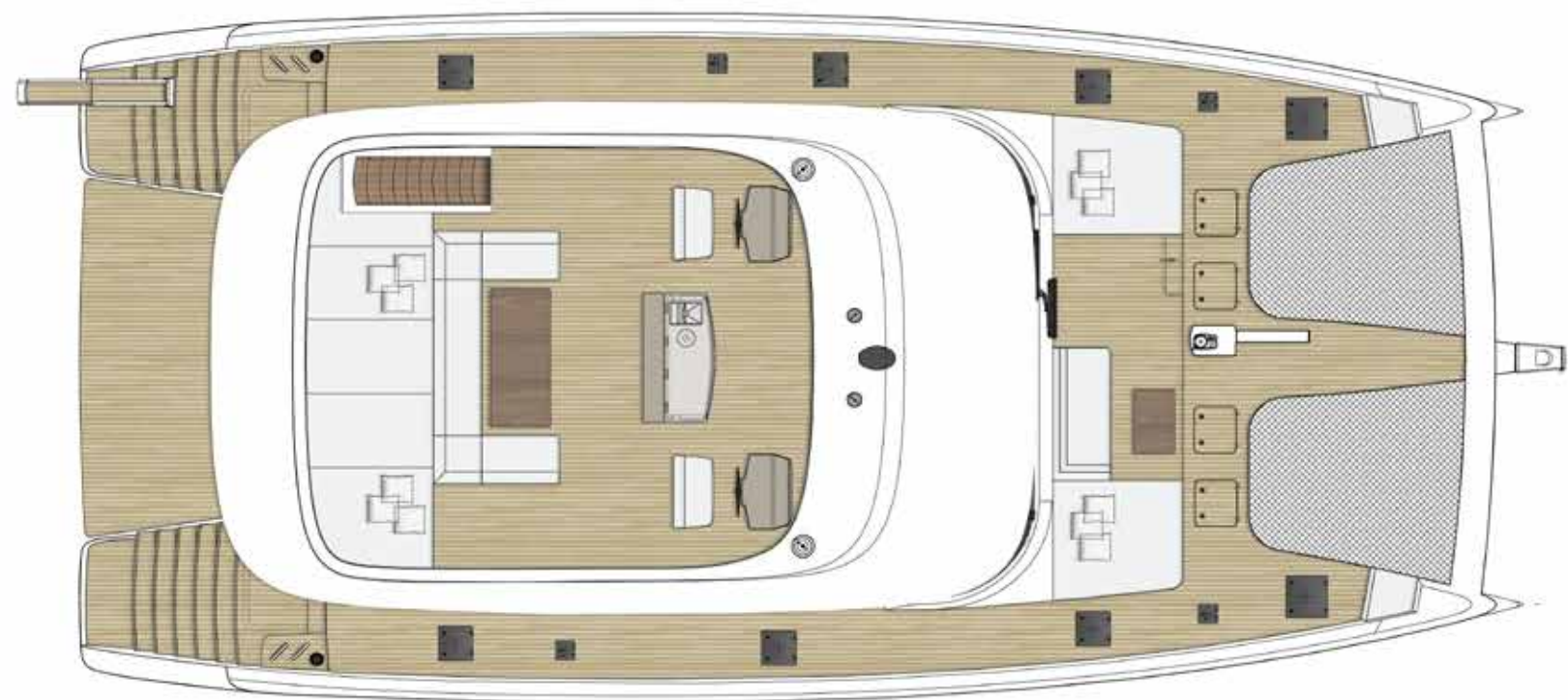
Perhaps the most prominent zone within the ship's interior is the central lounging space. There, you can enjoy a cocktail or a meal of your choosing while indulging yourself in breathtaking panoramic views of the world beyond. As is the case with most design elements that can be found aboard the Sunreef 80, the interior feels cozy, yet is spacious enough where you can still feel free. Whether you are witnessing the majestic beauty of the cliffs on the shore nearby or you are experiencing the frontier of the open sea, the commitment to balancing the virtues of mankind and nature was clearly something that the design team took seriously.

However, though the central lounge is certainly quite an impressive spectacle, you will soon discover that the sundeck is the ship's most remarkable space for lounging. The inclusion of a Jacuzzi, barbeque area, fully-equipped wet bar, and multiple other luxury features make the sundeck the perfect place for enjoying the company of those you care about most in the world. The pleasant aesthetic of the sails overhead will also help you feel even more in touch with nature.

At the end of the day—after enjoying the sunset from the spacious outdoor areas—you can wander back inside and continue to enjoy a life of leisure. Other features such as a retractable TV, plenty of sofas, a customizable gallery, and spacious master bedroom can help you rest comfortably after a long day of sunshine. The commitment to balance, to purity, and to excellence in design continue to remain apparent throughout the entirety of the ship.







### Creating a Better Catamaran

In order for any company to continue to remain competitive in the world of shipbuilding, they will need to keep finding ways to distinguish themselves from other shipyards. As can be seen, by the beautiful design layouts that the Sunreef 80 has to offer, it seems that Sunreef is an organization that has effectively established itself among the best.

The noble goals—the pursuit of purity, balance, personalization, and exceptional aestheticism—that Sunreef seems to be in pursuit of can be seen in each new ship that ever makes it to the water. There is something extraordinary about enjoying a catamaran. These ships are able to simultaneously combine the best of nature with the best of humankind. Though other shipbuilders may attempt to imitate their style and their unapologetic commitment to using only the purest design elements available, it seems that they have still established a distinctive level of quality that simply cannot be replicated.

As you walk across the sundeck and enjoy the beauty of the world around you, you will recognize that there is something about the Sunreef 80 that genuinely is exceptional. So rarely is a ship capable of demonstrating such a level of confidence and humbleness at the exact same time; so rarely is a ship able to exhibit purity and balance in every element of its design. Though perfection may not be something that can ever be achieved by the mortal hands of humankind, the progress and the efforts that have been made at Sunreef are evidence that we can continue to move closer. ⊕

### Specifications

» Length	24.4 m
» Maximum beam	11.5 m
» Engines	2 x 225 HP - 2 x 280 HP
» Fuel capacity	2400 l
» Water capacity	1600 l
» Mainsail	200 m <sup>2</sup>
» Genoa	155 m <sup>2</sup>
» Living space	340 m <sup>2</sup>

