

# YACHTS

## CROATIA

300 Pages in English and Croatian



9 77 1847 024009 00518  
SRBANIJ / MAY 2018 • Broj 53 • Godina 10  
750 DKK  
6,5 EUR

Gary Oldman, Andrea Bocelli,  
Neymar Jr, Roberto Cerea, Tommaso  
Spadolini, Vladimir Zinchenko, FIFA  
World Cup, Harley-Davidson Fat Bob

Adler Suprema 76, Sunreef Supreme 68,  
Raphael 65, Sirena 58, Cap Camarat 9.0 CC,  
XO Boats, Ferretti Yachts 50 Years, Aquila  
Catamarans, Croatian Charter Overview

Cruising Šibenik Archipelago, Trogir,  
Chefs' Stage, Taste of Japan, Baselworld,  
Royal Bled, Villa's Decor & Design,  
White Dream by Davor Rostuhar





KONCENTRIRANA FORMULA  
A CONCENTRATED FORMULA

# SUNREEF SUPREME 68 POWER

Sunreef Supreme 68 ima prostorije kojima 'izaziva' megajhte - i to sve na 20 metara ultraluksuznog katamarana

The Sunreef Supreme 68 packs megayacht-rivaling spaces into 20-meters of ultra-luxury catamaran

Text Steve Chalmers Photos Sunreef Yachts



U svijetu moćnih jednotrupnih superjahta, ključna je oduvijek duljina preko svega, pa stoga za potencijalne vlasnike, koji žele zamijeniti nešto novca za nešto duljine, brodogradilišta diljem svijeta grade sve dulje, u mnogim slučajevima, i vitkije jahte. Međutim, kupovati jahtu po duljini otprilike je kao da Bugatti Chiron kupujete povodeći se za apsurdnim brojem konjskih snaga njegova motora - da, tu su i mogu se iskoristiti, ali ih zapravo ne trebate. Tako i kada vlasnik ima na raspolaganju jahtu 50-metarskog trupa s tri palube, jednostavno mu fizički ne treba toliko prostora. Ustvari, što je neka superjahta veća, manje se koristi. Sunreef Supreme 68 raskida s pompom i pretencioznošću megajahte. Ovaj 20 metara dug dvotrupac pruža najbolje od svojih značajno većih rođaka sposobnih za plovidbu oceanom, ali nudeći ono što je bitno: salon superjahte, gornju palubu i prostor za opuštanje na pramcu. Koncipiran i sagrađen u Sunreefovom brodogradilištu u Gdanjsku, Supreme 68 razlikuje se od svega drugog na vodi. Osmišljen da pruži udobnost, uzbuđenje i zabavu kombinacijom pošteno, ali skromno oblikovanog eksterijera - ne brinite, nije stiliziran sportski - i 3.200 četvornih stopa pažljivo dizajniranog životnog prostora, ovaj brod je odraz nastojanja kućnih dizajnera da do savršenstva dovedu četiri glavna područja: središnji salon, spavaće kabine, pramčanu palubu i gornji most. Kad se spuste zastori u

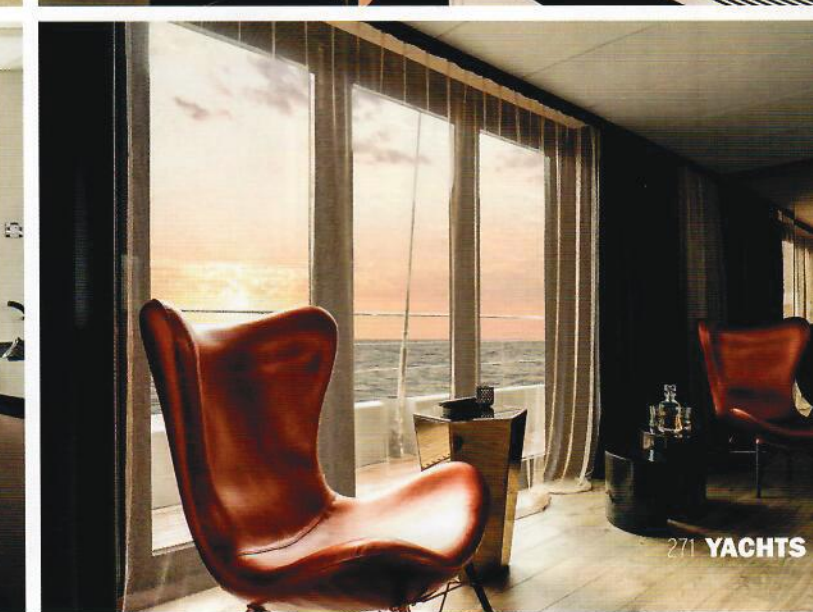
In the world of the mighty monohulled superyacht, length overall (LOA in yachting terminology) has always been king. However, buying a yacht for its length is like purchasing a Bugatti Chiron for its ridiculous horsepower; it's there, it can be used, but you don't really need it. Sunreef's Supreme 68 does away with the pomp, circumstance and pretentiousness of the megayacht. Instead, this 20-meter long catamaran takes the best parts of its considerably larger ocean going cousins to create what is essentially, a floating superyacht main salon, flybridge and foredeck lounge. Conceptualised and realized at Sunreef's historic Gdansk shipyard, this Sunreef Supreme 68 is like nothing else on the water. From the off, she was built to cosset, pamper and entertain, combining an honest and modest exterior style with 3200 ft<sup>2</sup> of custom-designed living space. With her straightforward layout and concentrated formula, Sunreef's designers have been able to focus on four main areas: the main salon, cabins, foredeck and flybridge, completing each to perfection. With the main salon's curtains closed, spending anymore than a couple of minutes lounging on the large sofa will have you completely forgetting you're floating on the water. It's only when the curtains are opened that you're reminded exactly where you are, and with the 68's fully folding cockpit and side doors, you get full connection with the sea.

glavnom salonu, sjedeći na velikoj sofi u trenu ćete zaboraviti da ste u nečemu što pluta na vodi. Stabilan kao što samo katamarani mogu biti, Supreme 68 jednako miruje na sidru i vezu u marini. Kada spustite televizor sa zaslonom od 55 inča i počnete pratiti program nestat će vam i posljednji trag osjećaja da ste na brodu - morat ćete razmaknuti zavjese da provjerite gdje zaista jeste. Ali kada kroz sklopiva vrata izađete u kokpit, uživat ćete u dodiru s morem što ga ni megajahta ne može ponuditi: na korak ste do oceana, bez obzira na to jeste li se odlučili za bar na lijevoj strani ili doručak za stolom za osam osoba na desnoj. Zahvaljujući konstrukcijskim osobinama, ovaj dvotrupac odlikuje se raskošnom širinom od 10,50 metara, većom nego na npr. jednotrupnoj jahti od 60 metara, a dok na takvim brodovima pramac guta dobar dio kvadrature, na katamaranu se pramčana paluba prostire do samog vrha obaju plovaka. Danju ta prostrana terasa služi opuštanju i druženju u privatnosti kakvu može ponuditi samo dvotrupna jahta, dok se na krmenoj strani gosti mogu zabavljati svime što pruža raskošna brodska plaža, smještena tako da ni najmanje ne ometa pogled iz kokpita. Zahvaljujući velikoj širini, slobodni dijelovi namještaja mogu se seliti kako gosti žele, bilo da se skupe radi ugodnih razgovora, dok djeca trče uokolo, ili razmjestite po palubi da bi se uživalo u osami, uz knjigu ili sunčanje. Oni koji se vole

Whether you're at the port side bar, or taking breakfast at the 8-seater dining table, you're only a step or two away from the ocean. Thanks to her broad catamaran design, the Supreme has a colossal beam (max width) of 10.5 meters. It's a mind boggling amount of space for a 68-foot vessel and the Supreme even manages to combine a garage/beach club aft - unheard of in catamaran terms, as normally, the tender is mounted at the transom. During the day the huge front terrace becomes the Supreme's focal point, mixing acres of lounging space, with the natural privacy of the foredeck. With such a wide beam, loose furniture can be placed anywhere on deck, creating a layout of your choice. Again, for the on board sun worshippers, the Sunreef's flybridge, with its six huge sunpads, is the perfect spot for working on that tan. Located forward of the helm, these beds are totally open to the sun's rays, and with nothing but endless ocean and sky in front, you'll have to be quick to reserve your spot. Behind the helm, a C-shaped sofa surrounds a fixed table and is serviced by a starboard side bar. As there is more than enough open area for absorbing some vitamin D, the lounge is thankfully covered by a large T-top. Even so, tinted panels in the roof let in plenty of natural light, with the T-top's arch thoughtfully located behind the sofa, leaving an unobstructed view forward and out the sides. With an overall de-

Kad provedete nekoliko minuta opušajući se na velikoj sofi u glavnom salonu, posve ćete zaboraviti da ste u nečemu što pluta na vodi

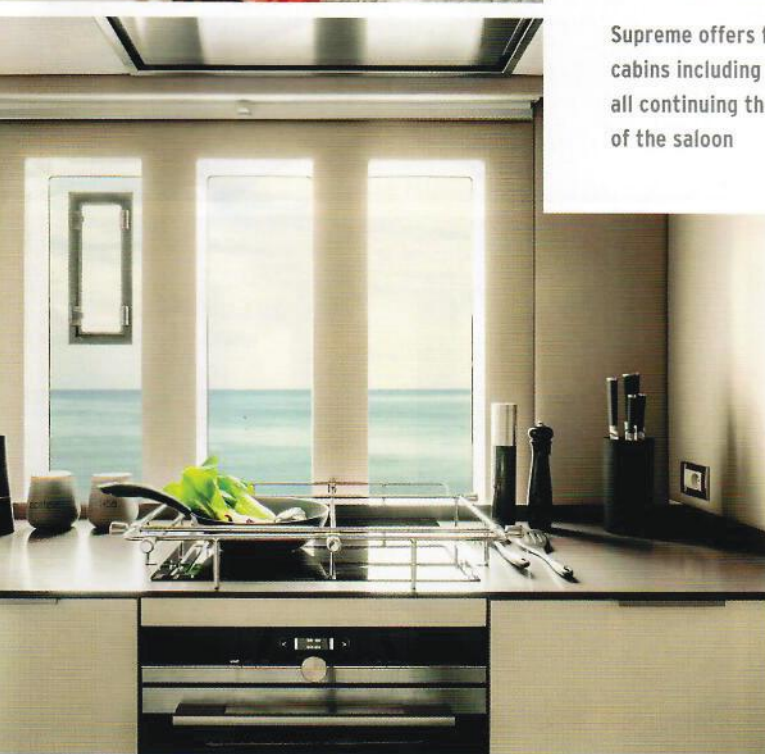
Spending anymore than a couple of minutes lounging on the large sofa will have you completely forgetting you're floating on the water







Supreme ima četiri raskošne kabine, uključujući vlasničku, sve uređene u jednakom smirenom, otmjenom stilu kao i salon



Supreme offers four luxurious cabins including a master-suite, all continuing the soothing décor of the saloon



izlagati suncu na svoje će doći na gornjoj palubi - na raspolaganju im je čak šest velikih jastuka pod vedrim nebom. Iza sunčališta se nalazi zapovjedno mjesto uz koje je naslonjač u obliku slova C koji mami one koji vole promatrati more s visine uz koktel iz obližnjega bara. Ako vam nije do upijanja vitamina D, možete se skloniti u dio natkriven velikim T-krovom ili u kabinu. Na modelu se nalaze četiri kabine, tri VIP i jedna vlasnička, sve opremljene king-size posteljama s pogledom na more - uživati u ljepoti oceana možete i ležeći, s glavom na jastuku. Svaka kabina ima pripadajuću veliku kupaonicu i garderobni ormar od poda do stropa. Sunreef 68 Supreme zapravo je uzor koncepta katamarana i vrhunske estetike. Riječ je zaista o superjahti duljine svedene na razumnu mjeru bez imalo gubitka prostora. Važno je spomenuti i da je kretanje po brodu izvanredno jednostavno i sigurno, a djeca vam nikada neće biti izvan nadzora. Štoviše, svi gosti na ovom će dvotrupcu uživati kao na savršenom obiteljskom brodu.

sign honed for sea-air living, guests will most likely only use the cabins for freshening up, changing into their swimwear, or sleeping. There are three VIP cabins and one Master suite housed in the 68's ample hulls, with all four retreats following Sunreef's iconic layout of having the King size bed facing the sea. There's nothing quite as spiritual as waking up to the ocean outside your cabin window and on the Supreme, you don't even have to raise your head from the pillow. Each of the cabins is on suite, with the Master featuring a larger bathroom with an extended walk-in closet. Sunreef's 68 Supreme Power is a prime example of a beautifully thought out catamaran project. What the 68 does do, is offer all the trappings of a scaled down superyacht, without the waste of space. At only 20-meters long, the cabins, the main salon, foredeck and flybridge can be reached in seconds. This is a huge draw for an owner with a family, as the kids will never be more than a few steps away and with such a versatile design and comforting ambience, chances are the 68 may well become an integral part of the family.



Duljina LOA: 20,5 m  
 Širina Beam: 10,5 m  
 Gaz Draft: 1,1 m  
 Motori Engines: 2x 225 KS HP or 2x 800 KS HP  
 Spremnik za gorivo Fuel capacity: 4.500 or 7.000 l  
 Spremnik za vodu Water capacity: 1.000 l  
 Projekt Naval architecture: Sunreef Yachts  
 Dizajn Design: Sunreef Yachts  
 Graditelj Builder: Sunreef Yachts