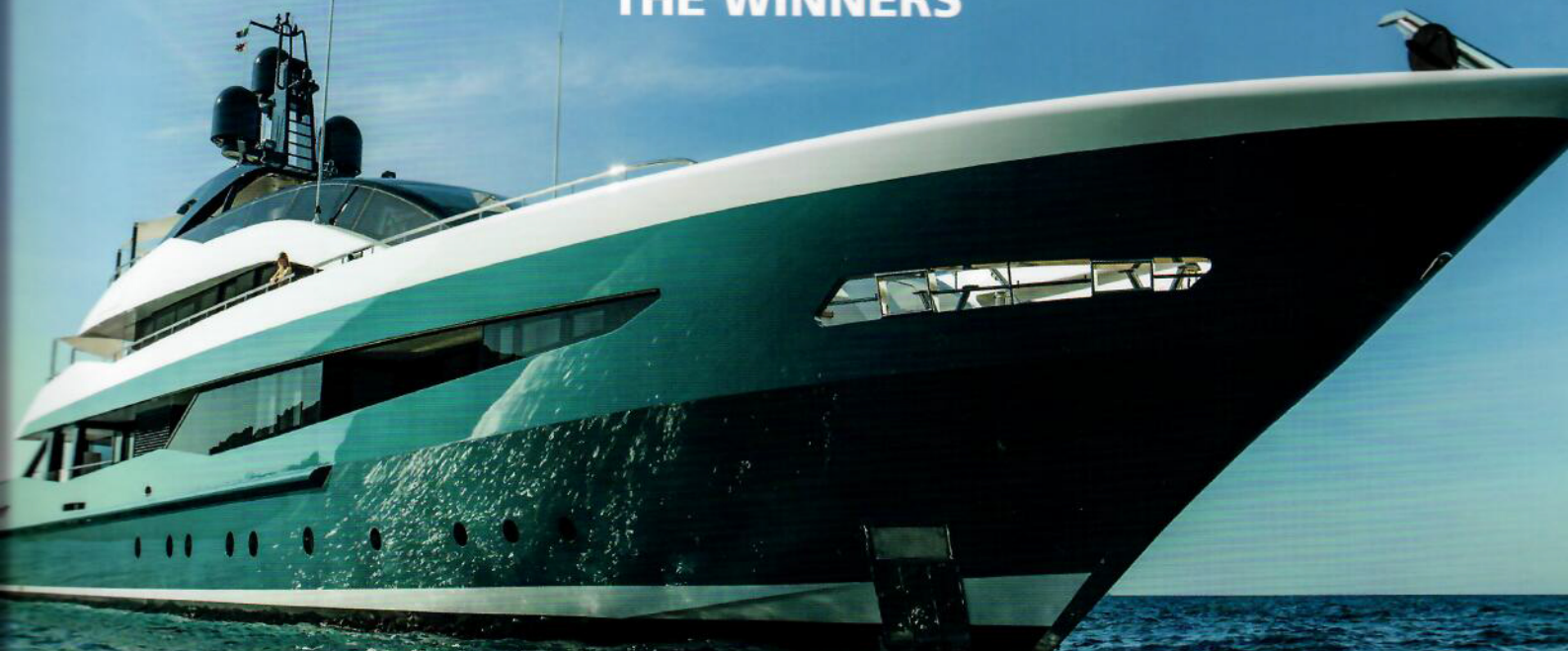


THE LEADING MAGAZINE FOR YACHT OWNER

YACHTS

EUROPE EDITION

2018
WORLD YACHTS
TROPHIES
17th edition
THE WINNERS




ON BOARD
GALEON 640 FLY
SANLORENZO SX 88
CUSTOM LINE 120
MANGUSTA 54 M GRANSFORT

PORTFOLIO
OCEANCO 90 M DA
BOAT SHOW
WHAT'S NEW IN 2018

HEESEN 51M IRISHA
THE ART OF THE SEMI CUSTOM

SG
Publications

L 18564-1-F-9,00 € - RD


BELAUX 9,60 € • CH 14,40 CHF • DOM/S 9,9 € • TOM/S 1300 CFP • ESP/PORT/IT/GR : 9,90€



SUNREEF Power 80

The Franco-Polish builder plans to advance its range of motor catamarans with the launch of a new 80-foot project with a particularly elegant design. As can be seen from the first sketches made by its in-house studio, the manufacturer's intention is to evolve in a high-end universe where luxury and refinement rub shoulders with spacious and comfortable facilities. To offer an even more generous living space, the entire forward area is fully decked to offer an outdoor lounging and dining space with sunpads. A door is integrated in the windscreen to make it possible to directly reach the saloon, which can be configured in various versions including an owners' suite or a relaxation space. From here, it is possible to reach the

Length: 23.95 m
Beam: 12.0 m
Draught: 1.25 m
Fuel: 2 x 5,000 l
Water: 1,600 l
Power: 2 x 575 hp or 2 x 1,200 hp



BUILDER
 Sunreef
 (Poland)

two hulls in which guest cabins can be laid out in different ways. The crew area, accessible from the cockpit, remains totally independent. The main helm station will be installed on the sundeck, well protected by a rigid bimini top. The other technical feat of this boat is located at between the two hulls aft in which it is planned to integrate an easily accessible garage, in which it will be possible to store a jet ski in addition to the tender. Different power options, from 575 horsepower to 2 x 1,200 horsepower, are proposed to satisfy lovers of long-distance or fast cruising. Entirely customizable, this new generation multihull could well persuade steadfast monohull enthusiasts towards the catamaran world.



WYT 2018

YACHTS *Parade* PARTICIPANTS



**40 OPEN SUNREEF POWER
DIAMOND EDITION**



FAIRLINE 43 TARGA



AZIMUT S6



SIRENA 58





WYT 2018

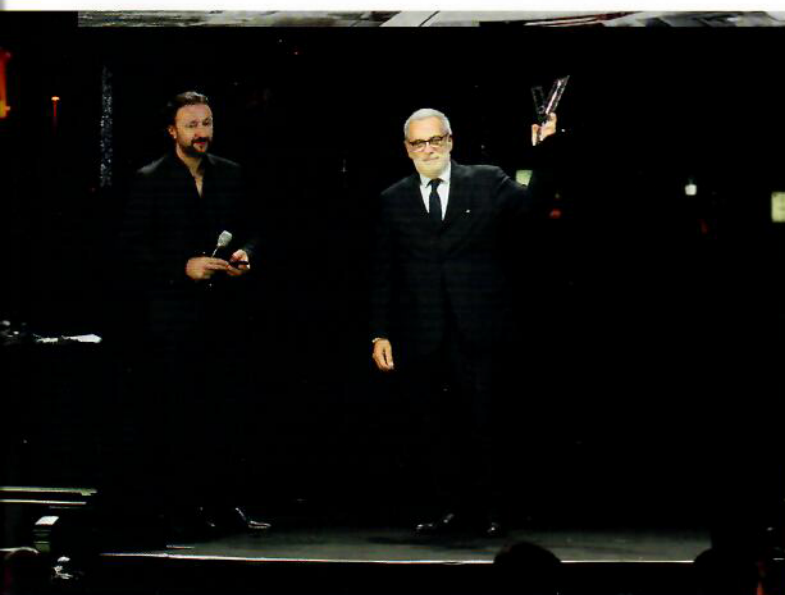


40 OPEN SUNREEF POWER

LENGTH: 13.10 M

POWER DRIVEN CATAMARAN

The 40 Open Sunreef Power Diamond Limited Edition is world's first multihull coated with Sun King Diamond Coating. The boat is an ultra-dynamic day cruiser, taking speed and elegance to a whole new level. Vast, stable and fully customizable, this radical multihull speedster is all about lifestyle and performance. Equipped with twin Mercury Racing 860 hp engines and an exterior finished in a diamond coating, this unique edition exudes thrill and brilliance. A beamy alternative to classic open boats, the 40 Open Sunreef Power represents a new level of on-board comfort. Two lateral aft folding platforms enhance the already generous living space of the catamaran, creating a spacious dedicated area from where one can enjoy watersports.



SPECIAL TROPHIES

Designer
of the year

TOMMASO SPADOLINI

In his forty-year career, Spadolini's signature has been written across the drawings of some of the most renowned yachting 'brands', notably with the creation of Fortuna, one of the fastest yachts on the planet. After collaborating on the Mercedes concept, created by Silver Arrows Marine, his talent was once again seen being put to good use at CCN with the Freedom project, designed for his good friend the fashion designer Roberto Cavali.

AIRFRANCE / **KLM**
PARTENAIRES OFFICIELS / OFFICIAL PARTNERS

McLaren
MONACO

AWLGRIP
by **AGL**

opacmare
Supplier to the best shipyards

Kartell
Flagship Store Nice

Edouard Denis