

YACHTSME.COM

YACHTS

MIDDLE EAST

• MARCH/APRIL 2022

YACHTSME.COM

YACHTS

MIDDLE EAST

RIVA 68' DIABLO

100 Sunreef Power • Cantiere delle Marche Aurelia
Wally WHY200 • Benetti 37M Motopanfilo • Belassi Burrasca
Saxdor 320 • Talal Abdin Nasralla • John W.R. Paul

ISSUE 80

PPMG

AED 40 KWD 3.2 BHD 4
OMR 4 US 10

ISSN 0261-6432
9 770261 643452

**HEESEN
DELIVERS
60-METRE M/Y
LUSINE**

Superyacht photographer Tom van Oossanen, has captured Heesen's latest launch, M/Y *Lusine*, leaving Rotterdam. Designed by Omega Architects, the ultra-efficient FDHF steel yacht is powered by two MTU 12V 4000 M65L turbo diesel engines and is equipped with full tropical air-conditioning.

Peter van der Zanden, general manager of design, development and engineering at the shipyard, said: "Thanks to the knowledge gained during the evolution of our steel fleet

over the years, our engineering and naval architecture teams easily hit all the targets. *Lusine* is one of the most complex steel yachts we have delivered to date, but our experience helped us find ingenious solutions and presented a solid foundation for intelligent innovation."

Lusine's layout is tailored around the Owners and their family lifestyle with accommodation for 12 in six staterooms, with the Owners' suite on the bridge deck. *Lusine* is the first yacht delivered by Heesen in 2022.



**SUNREEF
TO PREMIER
80 ECO AT
DIBS**

Poland's Sunreef Yachts has chosen the Dubai International Boat Show 2022 to premier its ground-breaking Sunreef 80 Eco. Combining pioneering green tech and custom-tailored design, the 80 Eco offers fuel-free cruising in total silence and supreme comfort. The Sunreef also boasts a custom-engineered battery bank,

an advanced hydrogeneration system and the shipyard's award-winning composite-integrated photovoltaic system with solar cells built into the yacht's hulls, mast, superstructure and bimini roof.

On display throughout the show, the 80 Eco will be available for viewings at stand MD-10.

CHASING SUPERYACHTS

With a colossal 13.5 metre beam, the 100 Sunreef Power has superyacht levels of usable space. Could the 30-metre Polish-built multihull entice superyacht owners away from their massive monohulls? We take a look at hull number one to find out.





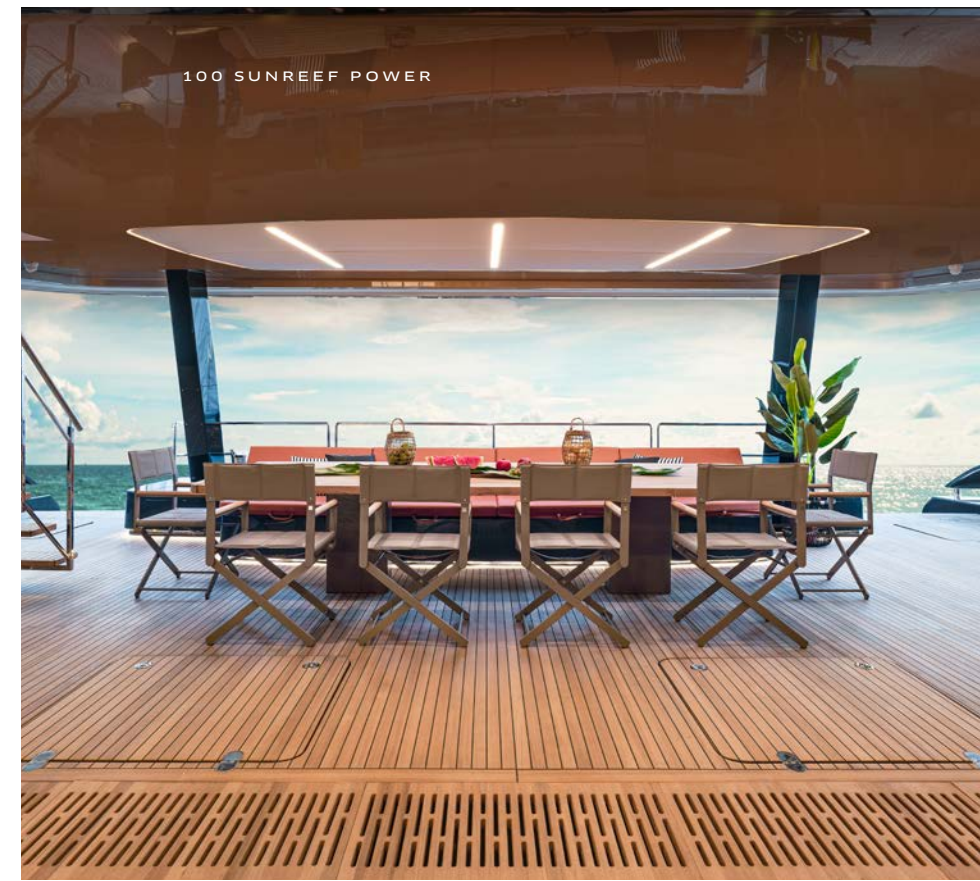
Comparing supercat beams with those of a superyacht never gets old. Take the 100 Sunreef Power that we have here for example. She has a colossal beam of 13.5 metres, which is equal to that of Turquoise Yachts's 77-metre M/Y *GO*. In fact, in terms of beam, the big Sunreef would actually make the superyacht Top 100, coming in at 99th place ahead of the Maltese Falcon with her 12.9-metre wide deck. Again, to put these numbers into context, the 100 Sunreef Power is only 30 metres long.

SUPERYACHT SIZE

"Sunreef Yachts is the only shipyard in the world to inject superyacht quality into multihull architecture," comments Francis Lapp – Sunreef Yachts' Founder and President and the 100 Sunreef Power is a testament to this. From the moment you step up the aft steps (next to the hydraulic platform and voluminous garage), the 100 gives you those superyacht vibes. Everything is XL here; the wide steps lead up to a huge open cockpit with a two-person lounge to port. Even with this large pad, ▶

47

Wide open space: The 100's cockpit offers an immense alfresco relaxation area.





48 For life on the ocean: The 100 Sunreef Power cuts an imposing presence and can be customised to match any plan and lifestyle.



► there's still plenty of room to walk around with the minimal dining table and chairs making even more space available.

As impressive as the cockpit is, a swift walk along either of the broad side decks takes you to one of the 100's most outstanding areas, the foredeck lounge. Featuring one of the largest sunpads on the water (for up to 12 people, no less), this is about as open as a yacht can get. Here the orange materials of the sunpad and L-shape sofas contrast with the wood floor and the dark hull colour creating a sophisticated lounging area. A door to the salon next to the port sofa allows refreshments to be served quickly, with the salon itself having little resemblance to that of a 30-metre monohull.

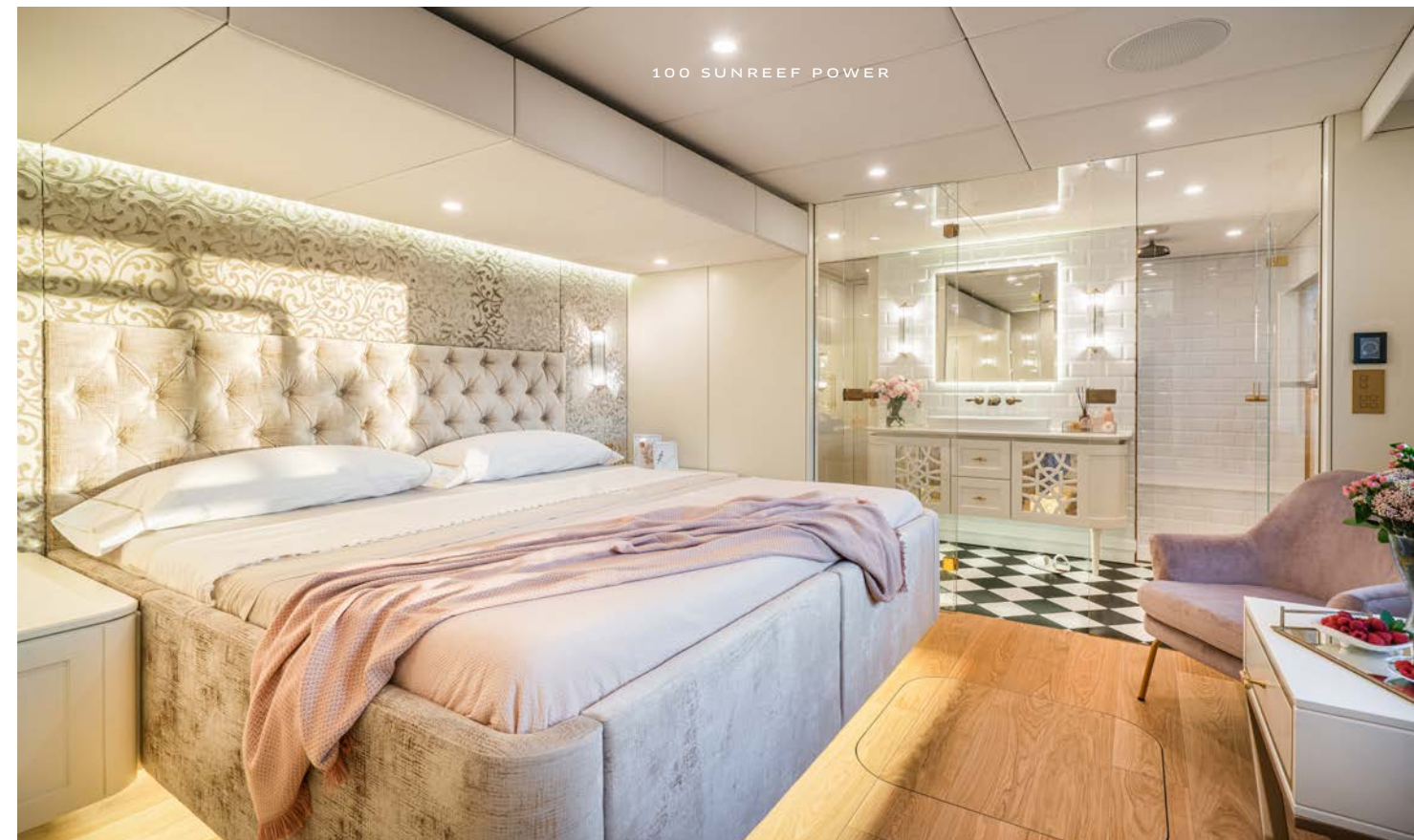
Even with the broad side decks, the 100's main salon is vast. Sunreef's interior designers had a lot of area to play with resulting in a design that is more reminiscent of a Parisian penthouse than a yacht. Highly customisable, it's easy to select a layout of your exact requirements. Hull number one has a galley forward and there's even enough room for a gym forward to port.

BELOW DECK

Hull number one has a traditional catamaran cabin layout with five, large double cabins for the Sunreef's Owner and guests along with three spacious crew cabins. The Owner's cabin, located to port, features a king-size bed and a lounge area next to the hull's large windows. The adjacent master bathroom is equally as impressive, with black and white tiling contrasting with the pastel hues of the bedroom. Behind the glass divide is a shower and basins with wardrobes and head located behind a sliding door.

ON THE FLY

Sunreef's customisation doesn't stop on the flybridge and it can be split into two with an enclosed Owner's suite forward and open lounge, or with a classic flybridge as seen on hull number one. Here, guest can admire commanding views of the sea from sofas, bar stools, the aft Jacuzzi and the helm seats. As well as all the mingling space you could ever need, the flybridge also houses a retractable projector, screen and high-end audio system for nights under the stars watching your favourite movies. ►



Cats are also popular on the charter market, offering guests huge amount of space in a relatively short LOA.



CONCLUSION

Due to their inherent stability, catamarans have always been seen as the number one choice for explorers. Cats are also popular on the charter market, offering guests huge amount of space in a short LOA. However, the 100 Sunreef Power takes the cat in a different direction, essentially chasing owners who want superyacht living spaces but at a fraction of the cost. "Our yachts are different from the catamarans you see on the market," says Lapp. "In the world of multihull boats, Sunreef Yachts are an exception. Thanks to projects such as the 100 Sunreef Power, we are also gaining ground on the superyacht scene, because more owners realise that catamarans make fantastic luxury yachts." 📌

