

INVICTVS™

By Invitation Only

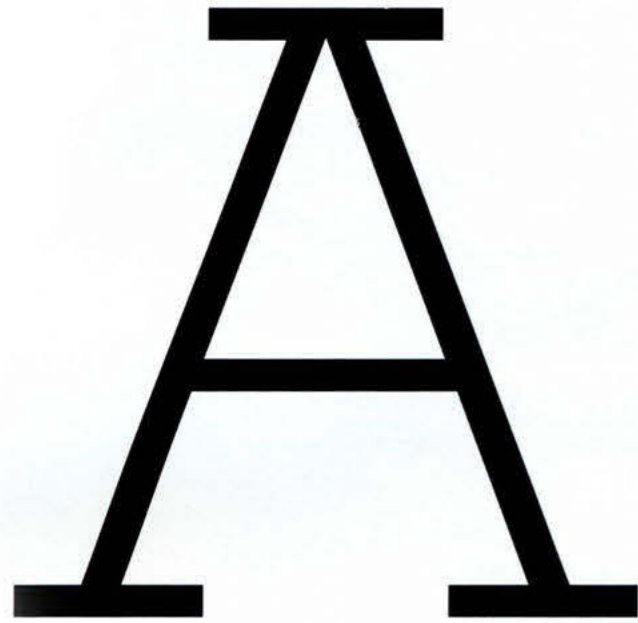
Issue 8 - Summer 2014



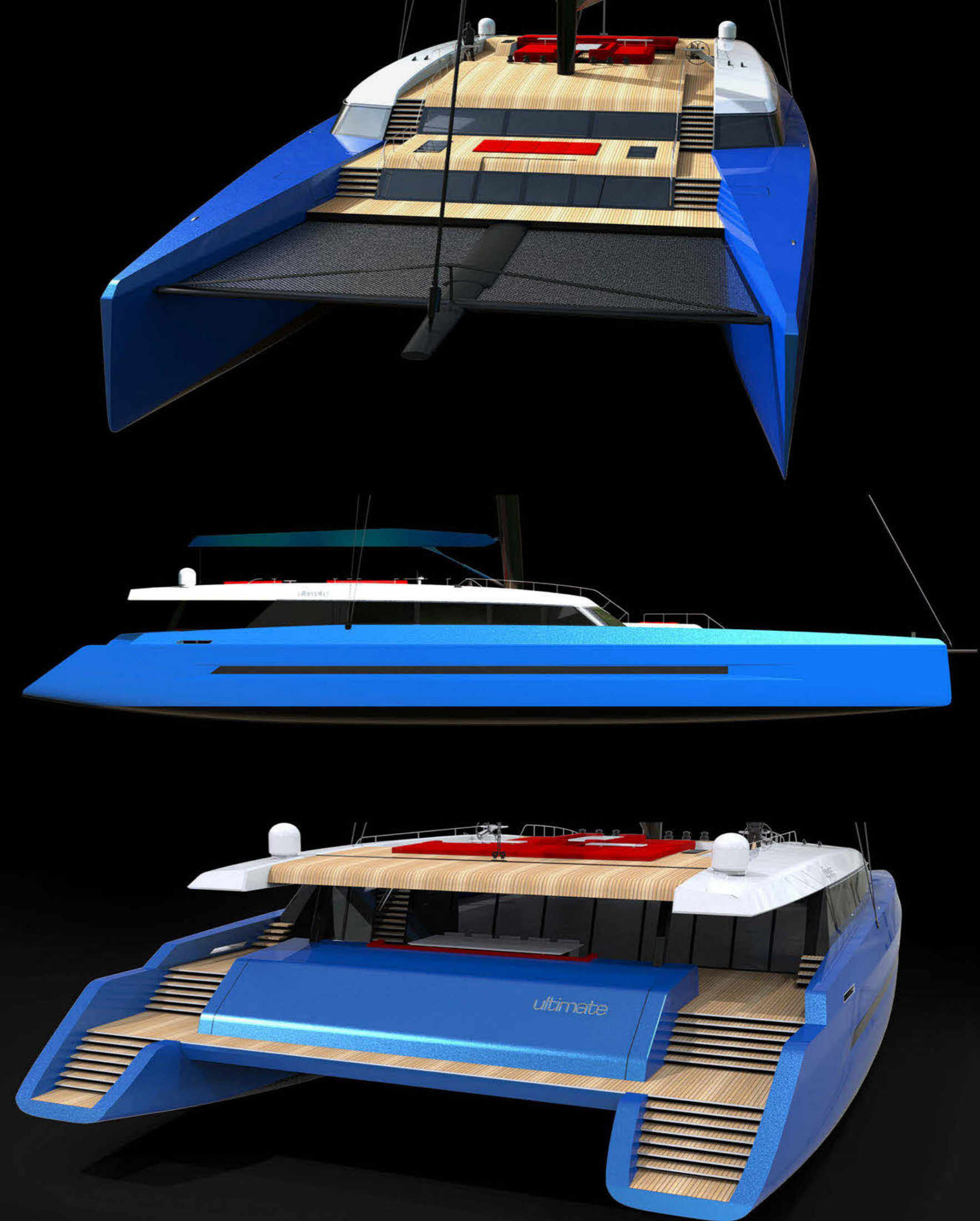
"I am the master of my fate I am the captain of my soul"

Sunreef's double deck

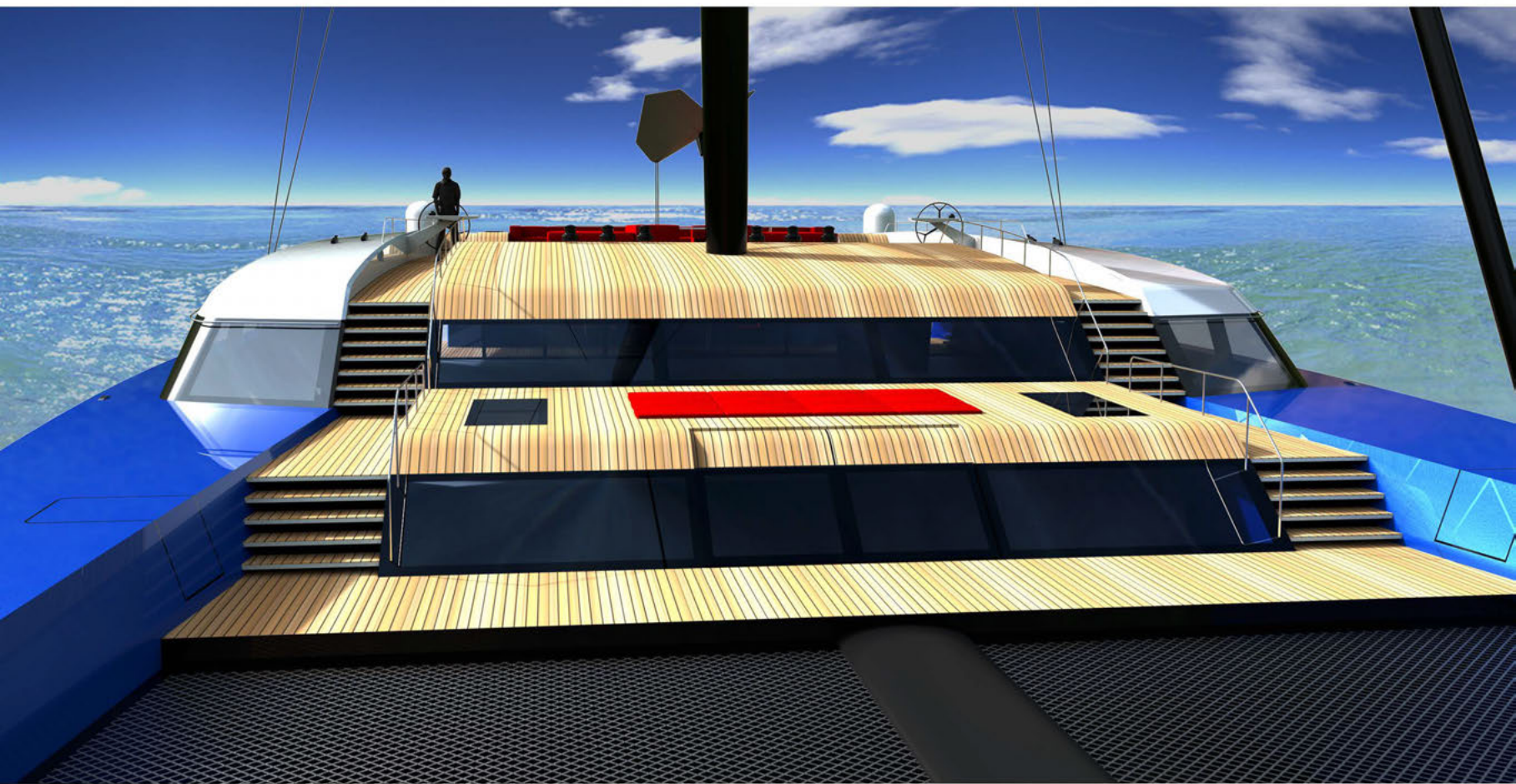
Ultimate 156 Catamaran



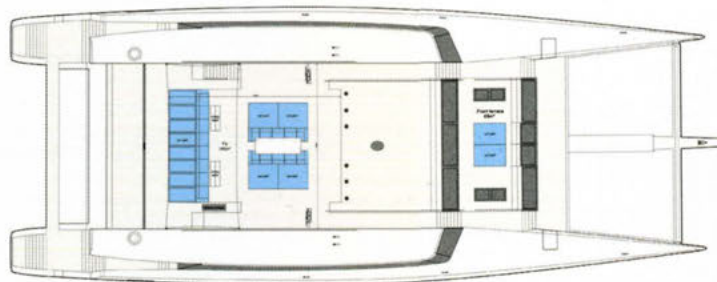
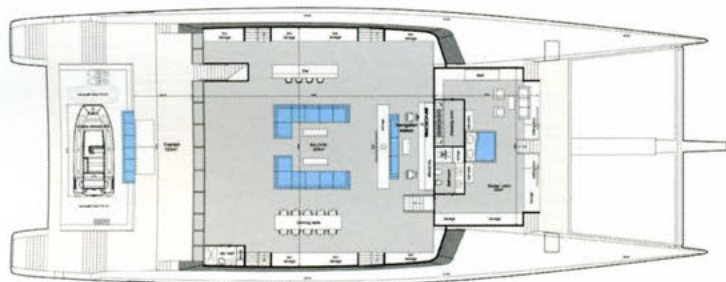
Always a yard that can be relied upon to keep progressing and pushing the boundaries in the sector they dominate, the enthusiasm and energy of Gdansk, Poland-based Sunreef appears to know no bounds. In 2010 the yard announced a new range of fast performance cruisers, being ultra-modern, high-performance sailing catamarans with environmentally friendly elements, they appropriately named it their 'Ultimate' line. Offering models between 70 and 170' (21m to 51m) in 2013 they unveiled their 165 Ultimate project, followed this summer by the latest addition to the range; this stunning 156 Ultimate. "The elegant and sleek minimalistic profile, extreme proportions and modern color combinations make Sunreef 156 ULTIMATE one of a kind," Robert Blazejak, the yard's Head of Concept Design Team told us. "With its spacious interior and exterior living spaces making full use of the wide beam, wrapped within dynamic sporty exterior lines, this catamaran is a masterpiece accomplished by Sunreef Yachts' design philosophy, pushing the yacht design industry to its highest limits," he says. The acres of deck space offered by the catamaran format, coupled with the comfort and stability of the platform, have long been recognized, but many potential owners have previously been put off by the genre's staid



INVICTVS



LOA: 156' [47.50M] • **BEAM:** 62' [19.00M] • **DRAFT:** 7' 2" [2.20M] • **CREW ACCOMM:** 8 • **GUEST ACCOMM:** 12
TOTAL LIVING AREA: 9,050SQFT [841SQM] • **INTERIOR AREA:** 5,489SQFT [510SQM] • **EXTERIOR AREA:** 3,562SQFT [331SQM]



designs and 'caravan charter' image. This is something Sunreef has blown out of the water and in doing so converted many new monohull and motor yacht owners to the catamaran cause.

The main deck of Sunreef 156 Ultimate has been split into two independent areas: a spacious 2,750sqft (255sqm) salon offers comfortable dining space for the twelve guests she can accommodate, a stylish lounge and bar space, plus an exclusive 699sqft (65sqm) master suite with wardrobe and his-and-hers en-suite designed to meet the expectations of the owners. Sole to ceiling windows in the master suite overlook spectacular views and provide lots of natural light. The matte interior in natural whitewashed wood is contrasted with black polished elements. The owner's stateroom also has direct access to the forward double deck terrace of 750sqft (70sqm), Ensuring easy access around the yacht and a natural flow of guests during parties or high occupancy

cruises, the forward deck connects with the upper sundeck of over 1,500sqft (142sqm) via two integrated staircases. The sundeck itself offers a dining table for a dozen guests and sunpads are strategically scattered around the vast area. While not lazing in the sun, guests can watch the chief chef—one of the eight crewmembers the 156 is designed to carry—prepare their lunch at the sundeck's integrated live cooking station. Throughout all exterior entertainment spaces versatility has been focused on during the design of the 156 Ultimate, on the foredeck for example the coffee table and sofa quickly transforms into a big sunpad area, all covered with a large size canvas bimini. There's much to like about this project and the potential for extended exploratory cruises in remote regions, glamorous onboard parties and charter opportunities are all very obvious. We're dog people ourselves, but along with many others we're in love with Sunreef's cats.