

New Design:

SUNREEF 62



A yacht manufacturer in Poland? Okay, it sounds like an odd place at first, but actually, the shipyard in Gdansk has a long maritime history, and Sunreef Yachts is continuing the tradition. Founded in 2002, they have been growing rapidly, doubling the size of their production facilities last year. This rapid growth obviously reflects the success they are having in the very competitive market of luxury boat building, and their most recent release, the Sunreef 62, *La Luna*, is a prime example.

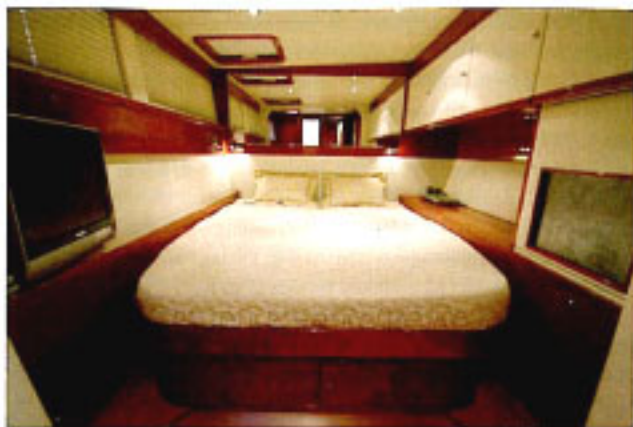
The construction of *La Luna* is composite, although the Sunreef Shipyard also builds aluminum hulls. To ensure top quality control, the design-engineering office and the workshops for the various stages of production are all concentrated in one place, reducing subcontractors to a minimum. All electrical, hydraulic and ventilation systems are designed and installed on the premises, with the principal systems (including the discharge of

black and grey water tanks, the level of fresh water tanks, starting the generator, control of watermakers, yacht's lighting, alarm signal, and even down to moving the plasma screen, lifting/lowering the saloon table and electrical blinds) are controlled by a touch screen.

The design department closely collaborates with future owners to insure all their needs and preferences are met, and to offer an interior design which is personal and unique. A large selection of both domestic and exotic wood types are available for the interior finish. Sunreef's painting workshop applies seven to ten layers of varnish in a specialized painting cabin, allowing a long drying time in between to obtain a full gloss shine.

The Sunreef 62 is designed for comfort with a choice of three basic layouts, charter, owner and semi-owner. *La Luna* has one master cabin and bathroom with separate shower, one large double cabin with





additional Pullman bed, and two double cabins with personal bathrooms. All cabins are fully air-conditioned. The beautifully designed interior features American cherry wood cabinetry and natural leather upholstery. Each cabin has its own stereo system, DVD player and LCD TV in addition to the extensive entertainment system in the saloon. And speaking of the saloon, the amount of living space it provides is exceptional, with two separate seating and dining areas to starboard, a large, forward facing nav station and a huge galley to port.

Just in case you're still claustrophobic, you'll find no shortage of wide open spaces outside to make you feel better. The cockpit alone is capable of comfortably seating the entire crew and more. Or, one can venture forward to the trampolines or bow seats which appear to be in the next time zone. But the prime seating is on the flybridge, where the 360° view is superb and all aspects of sail handling can be performed.



Interested? Well, you don't have to travel all the way to Poland. Sunreef has broker offices in the USA, as well as Italy, Spain, and Germany. For further information you can email: info@sunreef-yachts.com, or visit their website at www.sunreef-yachts.com. You'll find extensive information on the Sunreef 62, along with other models such as the their Sunreef 60 monohulls and their power catamarans. Tell 'em Lats & Atts sent you. ☞

SUNREEF 62



LOA:	62 feet
Beam:	30.5 feet
Draft:	5.4 feet
Engine:	2 x 100 hp
Fuel:	476 US gal
Water:	212 US gal
Cruising speed:	10 knots