

WORLD OF **PowerBoats**

THE PREMIER PUBLICATION FOR PERFORMANCE POWERBOATING

ISSUE 36 • MAY/JUNE • 2010 • £3.95/€6

SUNREEF 70

*THE SUPERB POWERCAT
FROM POLAND*



GARMIN
GPSMAP 78



PLUS

PAST TIMES:

Uncovering the 'Golden Oldies'

DUBAI BOAT SHOW:

Middle East's Nautical extravaganza

BUYERS GUIDE:

Taking delivery of your new vessel

INSIDE

GREENLINE:

*First Hybrid craft to
arrive in UK*

MUSCLE MOTORS:

USA's outboard power houses



WORLD CLASS 1 SEASON KICKS OFF ■ NEW RYA CHIEF SARAH TRESEDER



SUNREEF 70 POWERCAT

AFTER THE WORLDWIDE SUCCESS OF JAMBO, THE FIRST POWER CATAMARAN BY POLAND'S SUNREEF YACHTS BUILT FOR LAURENT BOURGNON AND HIS FAMILY, SUNREEF YACHTS IS PLEASED TO CONFIRM THAT THE EXPEDITION VERSION OF THE 70 SUNREEF POWER HAS PROVEN A POPULAR VERSION THAT HAS ATTRACTED MANY WHO WISH TO FOLLOW SIMILAR ADVENTURES. WORDS: DAVID SEWELL







The owners of ONDIN made their first appearance at the Cannes International Boat Show in 2008, where the première of the Expedition power catamaran was held. The Chilean family became friends with Laurent Bourgnon and revealed their dreams of lengthy travels alongside the South American coast and deep exploration of the wild and mysterious Patagonia. They had been looking for the perfect boat for their project for over two years prior to the show and when they found out about the idea of the Expedition power cat they knew that was exactly what they had been looking for!

They decided to go for a power catamaran appreciating the long range, very low fuel consumption and comfortable cruising thanks to its spaciousness and stability. ONDIN marries functionality and efficiency with exquisite interior finish and custom design.

The exterior shape of the ONDIN features streamlined marine

hulls meticulously designed by Sunreef's design studio with the help of Laurent Bourgnon to be as wave piercing as possible as well as underwater bulbs and aft platforms increasing the hull's length and enhancing the yacht's performance in natural way. All deck space is covered with teak with flush hatches integrated within. The gigantic flybridge has undergone major changes and has been divided into two main parts. The helm station has been incorporated to the interiors and permanently covered with a composite hard top which resulted in a comfortable and big helm section with two double captain chairs and impressive navigation board featuring all the best navigation and communication equipment from Raymarine and Plastimo. Inside, the helm station boasts also extensive storage space and a wine cellar. The outdoors of the fly bridge is accessible from the helm station or directly from the cockpit and there is room for individual accommodation depending on the yacht's current location. It can remain a huge play area for the kids or turn into a family dining area when table and seating are added.





The interiors have been laid out according to the owner's needs. The main saloon features a well equipped galley on the left, furnished with a full size side-by-side fridge freezer, dishwasher, trash compactor, ice maker, two ovens, one with grill function and microwave, electrical burners and the wine cellar. Additionally, many storage lockers are located within this area. On the right, there is a comfortable dining area for 8-10 guests with a large table and L-shaped. Internal stairs leading to the covered flybridge' helm station are located just by the entrance door on the right.

The main level gives access to the mezzanine floor featuring a cosy lounge area with a sofa facing a 40" LCD Sony television, DVD and Bose HiFi system. In all previous units of this yacht model, there is internal helm station on this level but in the case of ONDIN it has been relocated to the flybridge and integrated to the interiors. This area is ideal for intimate relaxing with friends or family.

Downstairs towards the bow, there is a beam-wide owner suite with a large queen bed and a 32" Samsung TV and DVD. This cabin also features a working cabinet with a sofa and plenty of storage, not even mentioning the outstanding view over the sea through the front windows.

Down the port side hull in the owner's suite there is a spacious bathroom with a full-sized shower with massage function, his and hers sink, bidet and toilets. The opposite hull comprises dressing room with wardrobes, lockers, storage and wall-long mirror.

From the saloon there is access to hull's cabins. There are two mirror VIP cabins in the midship sections of the hulls with queen size beds, working desk and seating, storage and private bathrooms. They are bright and luminous thanks to the 6 picturesque windows located on each hull. The aft sections feature the crew cabin with bunk beds and private bathroom on the port side while another guest cabin is installed in the starboard hull.

The interior design chosen by the owners keeps in cosy and homey style and ensures a relaxing touch so important during >

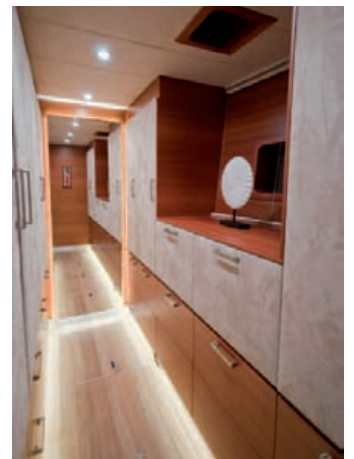




long term escapades. All seating and some wall decorations are made of dark green leather, walls are made of fawn alcantara while the ceilings of crème alcantara. The wooden parts and furniture are made of Macore mahogany wood and the flooring is composed of teak. Some furniture bases and decorative elements are made of brushed stainless steel. All interiors are luminous thanks to the large lateral windows and smartly designed open spaces inside the yacht.

As for the on-board lighting system, the ONDIN is equipped with the highly innovative NavyBus electrical distribution system by Navylec enabling operation of all interior and exterior lighting via remote control even at a distance of 300 meters. The captain will be able to turn the lights on/off or, to everyone's amazement, activate impressive lighting sequences from the beach in front of the yacht and create a spectacular display of light and colour. NavyBus technology allows the suppression of cables on board whenever possible by combining wired lighting and completely wireless switches. The system is based on remote intelligence with no centralization distributed via a communication bus and guarantees reliability, high durability and lower energy consumption.

The yacht will now be heading towards Central America where she will cross the Panama channel and cruise down to Chile. After a longer stay in Chile, the ONDIN will head for the southern cap of the continent and explore the Patagonia channels.



SUNREEF 70 POWERCAT

Year: 2010	Generator: 28 kVa
Hull: Composite	Engines:
LOA: 21.45 m / 70.4 ft	2 x Volvo Penta 265 HP
Waterline length:	Fuel tanks: 2 x 8000 L
20.54 m / 67.4 ft	Fresh water capacity: 1560 L
BOA: 9.31 m / 30.5 ft	Range at 10 knots:
Draft max: 1.55m / 5 ft	up to 7000 nautical miles
Light Craft Displacement:	Bow thrusters: Yes
47 tones	Guests: 8
Full Load Displacement:	Crew: 2
65 tones	